

LINEAR WASHING MACHINES



Steriline
ASEPTIC PROCESSING

LINEAR WASHING MACHINES AW SERIES



TYPE	AW-A										AW-B									
Max Diam./mm	18										27									
Max Height/mm	120										140									
SIZE	1	2	3	4	5	6	7	8	9	1	2	3	4	5	6	7	8	9		
Basket/Row	9	12	15	18	21	24	27	30	36	8	10	12	15	18	20	23	26	30		
pcs/min	180	240	300	360	420	480	540	600	720	160	200	240	300	360	400	460	520	600		
Length/mm	2600										2600									
Width/mm	1260	1350	1440	1530	1620	1710	1800	1890	1990	1260	1350	1440	1530	1620	1710	1800	1890	1990		
Height/mm	1800										1800									
Weight/Kg	1300	1350	1400	1450	1500	1550	1600	1650	1700	1300	1350	1400	1450	1500	1550	1600	1650	1700		

STERILINE linear washing machines **AW** series are designed to process small vials up to 27mm in diameter with a capacity up to **40.000 pcs/h**. All parts that come in contact with the interior of the glassware and process fluids are made of AISI 316L stainless steel. Other parts, such as the frame, shafts, and bearings are made of AISI 304 stainless steel.

The washing cycle can include ultrasonic bath, recycled water, new water, compressed air, siliconization, hot air drying and other options as required.

Pressure and temperature of the various fluids are monitored to assure constant performances. Vials are processed in an unidirectional way, avoiding any

potential contamination.

The vials are handled gently with low speed motion. Quiet, shock reducing, acetalic resin components prevent vial breakage and promote proper vial alignment throughout the process.

Acetalic resin baskets keep the vials steady and centred in upside down position. Precision stainless steel cones guide the needles into the baskets, accurately targeting each vial.

Vials are automatically discharged at the end of the production cycle onto the conveyor belt of the depyrogenating tunnel.



LINEAR WASHING MACHINES VW SERIES



TYPE	VW-A									VW-B									VW-C										
Max Diam./mm	36									52									78										
Max Height/mm	80									140									180										
SIZE	1	2	3	4	5	6	7	8	9	1	2	3	4	5	6	7	8	9	1	2	3	4	5	6	7	8	9		
Basket/Row	6	8	10	12	14	16	18	20	22	4	5	6	8	9	10	11	13	14	3	4	5	6	7	8	9	10	11		
pcs/min	110	133	183	220	256	293	330	366	403	66	83	100	133	150	166	183	216	233	40	53	66	80	93	106	120	133	146		
Length/mm	2600									2600									2600										
Width/mm	1445	1535	1625	1715	1765	1855	1945	2035	2125	1445	1535	1625	1715	1765	1855	1945	2035	2125	1445	1535	1625	1715	1765	1855	1945	2035	2125		
Height/mm	1800									1800									1800										
Weight/Kg	1400	1500	1600	1700	1800	1900	2000	2100	2200	1400	1500	1600	1700	1800	1900	2000	2100	2200	1400	1500	1600	1700	1800	1900	2000	2100	2200		

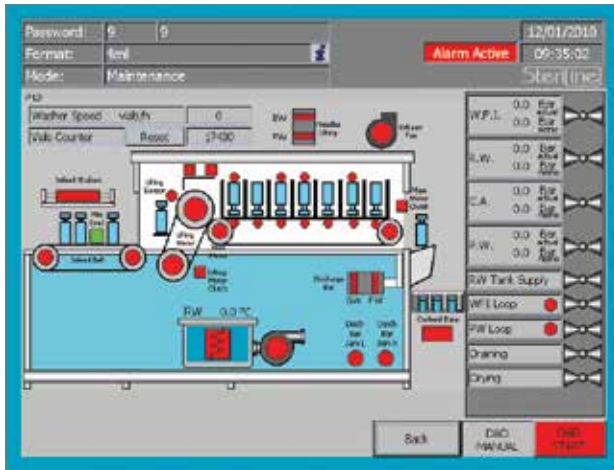


STERILINE linear washing machines **VW** series are designed to process vials up to 1.000ml with a capacity range up to **24.000 pcs/h**. Finishes range from mill finished to mirror polished. All welded points are argon atmosphere treated and then mechanically polished and passivated. The valves are high purity diaphragm type and pneumatically actuated; the pipe fittings are tri-clamp type and all piping is fully drainable. The washing cycle can include ultrasonic pre-wash, recycled water, new water, compressed air, siliconization, hot air drying and other options as required. Pressure and temperature of the various fluids are monitored to assure constant performances.

Vials are processed in an unidirectional way, avoiding any potential contamination. The vials are handled gently with low speed motion. Quiet, shock reducing, acetalic resin components prevent vial breakage and promote proper vial alignment throughout the process. Acetalic resin baskets keep the vials steady and centered in upside down position. Precision stainless steel cones guide the needles into the baskets, accurately targeting each vial. Vials are automatically discharged at the end of the production cycle onto the conveyor belt of the depyrogenating tunnel.

Automation

The integrated control system, including PLC and HMI, automatically controls all process and functional parameters of the machine, according to vial size and type. Parameters are stored in different recipes, protected by password and accessible only by supervisor and authorized personnel. Alarms are automatically displayed on the screen.



All STERILINE washing machines are designed in compliance with cGMP, GAMP and 21CFR Part11 requirements.

Steriline
ASEPTIC PROCESSING

STERILINE srl - Via Tentorio, 30 - 22100 Como - ITALY
Ph. +39 031 592 064 - Fax +39 031 591 976 - www.steriline.it